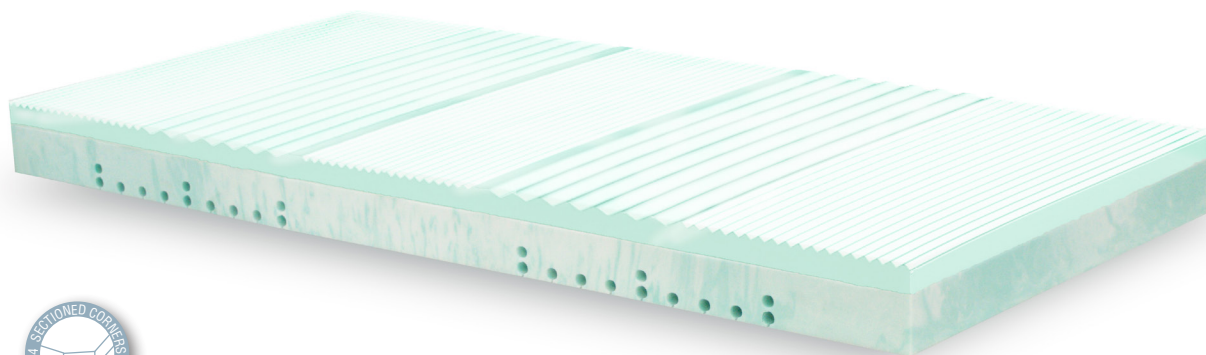


Density475Mattress



Biogreen +
Viscoelastic



31kg
density



50kg
density



100%
NATURAL LATEX
FREE



Vegetal
origin



THERMO-
ADAPTABLE
material



CONFORMED
material



BREATHABLE
material



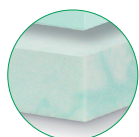
Anti-allergy
materia



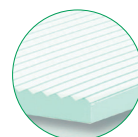
+ Mattress characteristics

Specially designed mattress to be used in hospital and health centres, for patients with medium-high ulceration risk, as well as for mitigate pressure ulcers or sores in medium stage.

+ Core



1. High density polyurethane, Biogreen, foam based core (31 kg/m³). Made of vegetal origin natural products, renewable and non-polluting. 10 cm. height.
Biogreen is composed by open micro cells, which provide maximum breathability.



2. Upper layer made of high density (50 kg/m³) MF viscoelastic. Bio, which combines the Biogreen foam properties and the MF foam. Mind Foam (slow memory and high density viscoelastic foam, with a wrap around effect). 5 cm height.
Enhanced core with Aloe Vera extracts that provide freshness.

+ Technical specifications

| | |
|------------------------------|----------------------|
| Core height | 15 cm. |
| Core weight | 10 kg. |
| Maximum patient weight (MPW) | 230 kg. |
| Ulceration risk | II-III / Medium-High |
| Available widths | 80 / 85 / 90 cm. |
| Available lengths | 180 / 190 / 200 cm. |



Density475Mattress



+ Core characteristics



- Upper layer conformed with different patterns, divided in 5 sections, depending in patients pressure areas, to improve the blood circulation and pressure of the patient.
- Mattress base framed, for optimal bed core adaptability, when the bed sections are articulated.
- Microperforations made in the viscoelastic layer, to provide greater mattress breathability.
- Comfortable, ergonomic and non-deformable.
- All foams are Oeko-Tex class I and REACH certified.
- Symmetric core allows using indistinctly the head or feet areas
- OPTIONAL: Cut the mattress corners for better adaptability to beds.

+ Pressure map

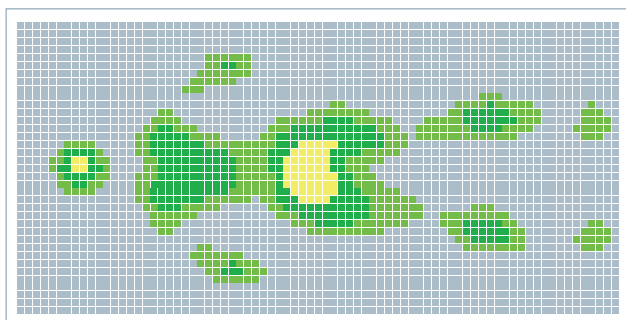
The contact pressure test shows that a Model user keeps in contact most parts of the body, no matter in the whatever position is taken, consequently there is a large contact surface between the mattress and the user, avoiding high pressure points that may cause pressure ulcers (bedsores).

The test prove that it is a mattress ideal to be used with long term bed-ridden patients, as it is very comfortable and adapted to the patient.

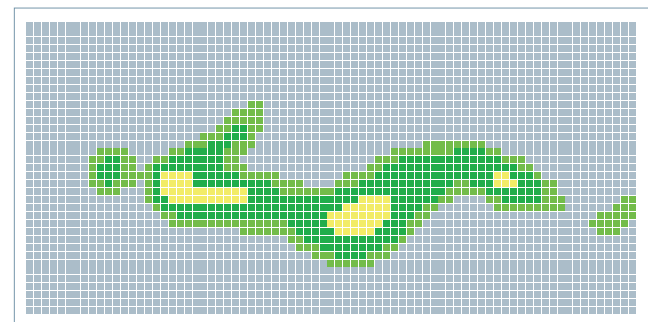
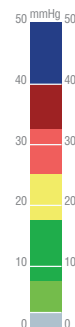
In positions such as supine or Fowler, the medium pressure showed didn't exceed 12 mmHg.

In other positions, lateral or seated, the Model didn't overcome 15 mmHg. on average, but it could be observed in the graphics the highest pressure points (23 mmHg.) on hip, sacral and shoulders areas.

Furthermore, for a greater patient comfort, this mattress is designed to be use preferably with phenolic bed bases.



Gender: Female. Weight: 95kg. Height: 170cm.



Gender: Female. Weight: 95kg. Height: 170cm.